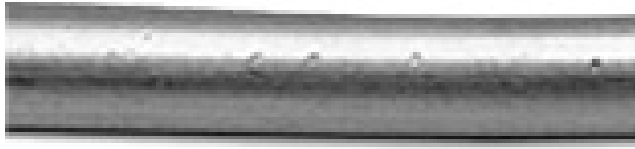


BARE COPPER



- ▶ **Solid Conductor**
- ▶ **Bare or Tinned**
- ▶ **Soft (Annealed)**

APPLICATIONS

For use in electrical grounding systems and on insulators for overhead transmission and distribution applications.

COMPLIANCES

ASTM B3 (soft or annealed), ASTM B33 (tinned soft or annealed)
 REA/RUS approved
 Federal Standard QQ-W-343
 RoHS compliant

USAWC Part #	Size (AWG or MCM)	Nominal Diameter (Inches)	Soft (Annealed) DC Resistance (Ohms/1000 ft.) @ 20°C		Approx. Net Wt. (lbs./1000 ft.)
			Bare	Tinned	
USA8-01SOLSDBC	8	.1285	.6281	.6426	50.0
USA6-01SOLSDBC	6	.1620	.3952	.4109	79.4
USA4-01SOLSDBC	4	.2043	.2485	.2528	126.4
USA2-01SOLSDBC	2	.2576	.1563	.1580	200.9